

David Suzuki
Public School
45 Riverwalk Drive
Markham, L6B 0L9
905-209-0435



Principal
Yvonne West
Vice-Principal
Shelley Anand

Admin Assistant
Gail Koidis

Secretaries
Rama Kanagarajah
Sunitha Krishnan

Superintendent
Dr. Lisa Walsh

Trustee
Jaunita Nathan



SUZUKI SOURCE

Volume 5



davidsuzuki.ps.yrdsb.on.ca

January 2015

Administrators' Message

Welcome back and Happy New Year! We hope that everyone had a wonderful holiday filled with the love of family and friends. As we begin the New Year, we will continue to focus, as we always do, on improving student achievement. First term report cards will be sent home mid-February, thus, teachers will soon begin to collect summative data so that they can provide you with a clear picture of your child's achievement to date. They will also work with students to review previous goals and perhaps identify new goals as we move forward into the second half of the year. Your child will need your help, along with ours, to work towards achieving these goals and, therefore, we encourage you to engage in on-going discussions with your child about their learning and their goals. There will not be pre-scheduled conferences as those conferences occurred as a part of the Progress Report Card process in November. However, if at anytime you feel that you would like to have a conference with your child's teacher, you simply need to call and request an appointment and you and the teacher can arrange a time to meet that is mutually convenient.

Please know that your confidence and your trust in us, as well as your active involvement in your child's schooling are integral to the vibrant and successful partnership that we share. Please do not hesitate to contact Ms. West, Mrs. Anand or any of our staff at David Suzuki if you have any questions or concerns about your child or the school. We truly appreciate and value your ongoing support and know that this can only be possible through open and honest dialogue!

Yvonne West, Principal
Shelley Anand, Vice Principal

HAPPY NEW YEAR

January's Character Trait: Optimism

We maintain a positive attitude. We look on the brighter side of situations. We are able to see opportunities even in the face of adversity. We have hope for the future.

David Suzuki is a great place to be because Character Counts!



Character Matters - EMPATHY

December's character trait was **Empathy**. "We strive to sense and appreciate the emotions of others, to "stand in their shoes". We demonstrate appreciation of, and concern for their feelings. We try to understand issues from their perspectives even though we may not agree with them personally."

Congratulations to our Empathy winners:

| | | |
|------------------|--------|------------------------------|
| Mrs. Neate | FTJSA | Tamileanthi, Zehra, Kristina |
| Ms. Llewellyn | FTJSB | Nedi, Arav |
| Miss Halliday | FTJSC | Christian, Sophie |
| Mrs. Gertsakis | FTJSD | Shabi, Iris |
| Miss Eng | FTJSE | Enya, Dhivya |
| Mrs. Hudspith | FTJSF | Ethan, Alina, Khai |
| Ms. Hall | FTS/1A | Feroza, Ashna |
| Mrs. Barovier | 1/2A | Sara, Anoushka |
| Ms. Wood | 1A | Tyler, Januya |
| Mrs. Tsiampouris | 1B | Krishiv, Athavan |
| Mrs. Sambrook | 1C | Shivali, Guneet |
| Mr. Hwee | 2/3A | Rohan, Sophia |
| Miss Chan | 2A | Meilayna, Arya |
| Mrs. Clements | 2B | Pooja, Naya |
| Miss Steele | 2C | Safa, Abera |
| Mrs. Arumugam | 3/4A | Tina T. |
| Mr. Kawnik | 3A | Likhitha, Nicole |
| Mrs. Nedelkovski | 3B | Vernujen, Husna |
| Mrs. Cooper | 3C | Nikke, Neketa |



In January our focus is on Optimism.

"We maintain a positive attitude. We look on the brighter side of situations. We are able to see opportunities even in the face of adversity. We have hope for the future."





SUZUKI SHOUT OUTS!

Well the Winter Break has come and gone, but as we're struggling to stay warm it helps to think about all the fun we had the last week of school during our Winter Spirit Week! Student council was pleased to present a fun spirit week filled with exciting activities each and every day. On Monday, primary students gathered in the gym during lunch recess to watch Frosty the Snowman and on Tuesday it was time for the juniors to watch their movie, A Charlie Brown's Christmas. Tuesday was also our Winter Wear spirit day and the whole school got to dress up in their winter wear complete with scarves, hats and mitts. Wednesday was our delicious cookie sale and Thursday was our Holiday Sing-Along. Friday was the most comfortable and cozy day of all because we all came to school in our pajamas for pajama day!

A BIG thank you goes out to the members of our student council who made this week possible. Another big thank you goes to the teachers supporting student council, Mr. D'Alessandro, Madam Chien, and Ms. Benson, as well as Mr. Schaub, Mr. Binner, and Mr. Lowrie for making our Holiday Sing-Along such a blast.



Thanks for the great work student council!

Student Council Members:

President: Krupali

Vice Presidents: Rohan & Ashton

Treasurer: Osmund

Secretary: Branavan

Public Relations: Ashna

Athletic Representatives: Adnan & Layla

Eco Representatives: Tooba & Doaa

Curriculum Corner

Learning is an ongoing process. It is important for children to reflect and set goals. Encourage your child to keep a Reader's Notebook to record what they have learned, to reflect and develop their ideas about what they have read.

Some possible prompts for a Reader's Notebook:

This was about...

The most significant event was...

An idea that inspired me...

I did not understand this part because...

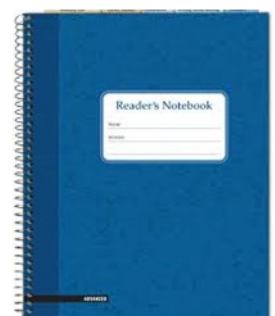
The character reminds me of...

This book relates to my life in the following ways...

I changed the way I think/feel about....because...

Some questions I have....

Another point of view might be....



Taken from "A Guide to Effective Literacy Instruction, volume 2"



Prayer Room

At David Suzuki Public School we are committed to embracing cultural and religious diversity. Thank you to all our families for completing the Religious Accommodation form that was sent home in the Fall. Based on input from families, students and our school Equity Committee we will be implementing the request for a Multi-Faith Prayer Space. Students will have an opportunity to pray on Fridays between 1:15-1:25pm. It is an opportunity for students to engage in their religious practice. Please be advised that there will not be direct supervision from staff. **Students who have completed and returned the permission form to the office may use the Multi-Faith Prayer Space.** If you are interested in having your child participate, your child MUST get a permission form from the office and return it before attending on Fridays.

Our MultiFaith Prayer space will be open for use from January 23, 2015.

Charity Drive

Thank you to all the families who donated to the Women's Shelter this year. Because of your generosity, we had over 300 items to donate to families in need! A special thank you to our School Council, in particular Mrs. Randazzo, for spearheading this very successful and worthwhile Annual Donation Drive.



Junior Kindergarten Registration

Starting on Friday, January 16, 2015, at 9:00 AM we will begin accepting registrations for September 2014. Registration forms are available on the Board's website: www.yrdsb.edu.on.ca.

Students eligible for Junior Kindergarten will have been **born in 2011**. Students currently in Junior Kindergarten do not have to re-register for Senior Kindergarten.

The **original** documentation that is required for registration is:

- Birth certificate or passport and landed immigrant papers
- Proof of residency (we only accept property tax bill, property tax assessment statement, mpac form, offer to purchase, or lease agreement)



French Immersion Information Sessions and Registrations

Information sessions for the French Immersion (FI) program will take place at **Sam Chapman P.S.** on January 15, 2015 at 7 p.m. FI registration will begin January 16, 2015. In order to streamline the registration process, parents or guardians of Senior Kindergarten students entering Grade 1 in 2015, and wishing to enroll in the FI Program, can visit or call the school office and request an *Office Index Card - short version*. The Office Index Card must be signed by the principal of the home school. Parents or guardians then take this form, along with one piece of identification showing their address to Sam Chapman P.S. to register between January 16 and February 13, 2015. This eliminates the need to provide duplicate enrollment information or to pre-register.

YRDSB's FI Accommodation Plan provides long-term consistency and equity of access to all students in York Region and will enable YRDSB to continue to offer the FI program to all who wish to enroll. The FI program will be offered in Dual Track or Single Track settings, in a variety of configurations. In order to meet community needs and optimize available space in our schools, a community's Grade 1-8 FI program may be provided over more than one school during the course of a student's FI education. This will allow flexibility in addressing community needs and the opportunity to use existing space in schools. More information is available on the Board's website: www.yrdsb.edu.on.ca. Please note: Some of the FI accommodation plans will require facility modifications or the development of new schools and will require short-term transition plans that might include overflow while we work toward the long-term vision. Overflow refers to situations in which the Board directs students to attend a school other than their community school or optional program for a specific period of time, as defined in Policy #108.



Inclement Weather



SCHOOL BUS CANCELLATION NOTICE DUE TO INCLEMENT WEATHER

School bus service may be cancelled from time to time due to inclement weather and/or poor road conditions. In these cases, parents and students should develop alternate care/transportation arrangements. Since busing schedules begin by 7:00 a.m. or earlier, all cancellation decisions must be made by 6:00 a.m. to ensure the safety of our students. Cancellation decisions are made by the Board and will only be made after thorough consultation with school bus companies servicing York Region.

Please note: If buses are cancelled in the morning, they will not operate in the afternoon. Therefore students transported to school by parents in the morning will need to be picked up by parents at the end of the school day..

Parents, students and school staff are asked to access the following radio and television stations after 6:00 a.m. to receive bus cancellation information:

RADIO AM Stations - 590, 640, 680, 860, 1010, 1050, 102.1, 1540, 1580,

FM Stations - 88.5, 89.9, 92.5, 93.1, 94.1, 94.9, 95.9, 97.3, 98.1, 99.1, 99.9, 101.1, 104.5, 100.7, 107.1

TELEVISION CITY TV, THE A-CHANNEL, CFTO TV, THE WEATHER NETWORK, GLOBAL

A bus cancellation message will also be available at www.schoolbuscity.com and by calling 1-877-330-3001.

Attention Grade 8 Parents/Guardians!



It is that time of year again...**option sheets for grade 9!**

Our current grade 8 students need to start thinking about what courses to select for high school and what level of course is best suited for their learning. Please take some time with your child to communicate and explore through the following website:

www.yrdsb.edu.on.ca/guidance.services

Each student has already received their user name and password for log in purposes.

Here are a few important dates to note:

- Registration Forms (paper copy) are due to Mrs. Scott, Mrs. Ming or Mr. Lowrie by **Thursday, January 15**
- Transfer requests for other YRDSB schools, **Thursday, January 15th.**

Please note that Bur Oak Secondary and Pierre Elliot Trudeau are NOT accepting transfers.

- Online Course Selections must be submitted by **Friday, February 20th** (students must also print a paper copy of their course selections and submit them to Mrs. Scott, Mrs. Ming or Mr. Lowrie)

SCHOOL PARKING LOT AND TRAFFIC FLOW

The City of Markham has recently issued tickets to the owners of some vehicles parked at our school. Please be advised that the City is able to ticket for the following violations:

Idling

Parking in a fire route

Not physically being inside the car at a kiss and ride area

Parking in a bus route

Obstructing a fire hydrant

Parking in a designated handicapped space without a permit



We ask that you take care in abiding by the traffic by-laws, as we do not know when the City of Markham may be making visits to our school. As well, the fines can be quite high and unfortunately, the school has no ability to override a ticket if it has been issued by the City.

Kiss and Ride

Parents familiar with morning traffic know just how congested it can be in the morning in front of the school and in the drop off loop in the parking lot. We strongly encourage students to walk to school. However, if you must use the loop in the morning, **please do not leave the car or wait in the loop at any time.**

There are two lanes of traffic in the loop. The lane closest to the sidewalk is for the purpose of drop off. The outside lane is an exit lane to be merged into after dropping off your child.

Children should not be exiting the vehicle on the driver's side between the two lanes of traffic as this is very dangerous. Your child should be exiting in the lane closest to the school and exiting out the passenger side of the vehicle so that he/she is stepping on to the sidewalk. Once dropped off, students should proceed directly to the schoolyard or Kindergarten fenced area. If you wish to park and walk your child to the schoolyard, **please park on a side street as there are only enough parking spaces for our staff to park.**

Please do not park in the Kiss and Ride Loop, this is for dropping off only.

What To Do With Old Electronics?

Did you get or give new electronic toys over the holiday? Are you going to throw out your old electronics? Don't put it in the trash!!!

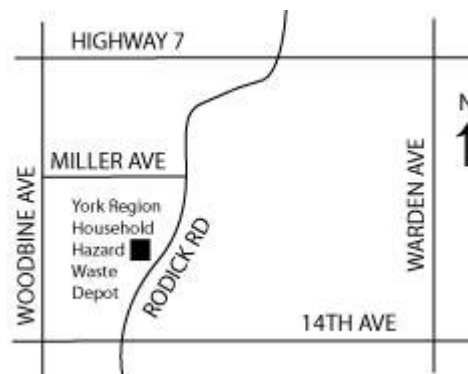
All electronic waste can be dropped off at the **York Region Household Hazardous Waste Depot**.

Here is what they will accept

- Televisions (limit of 2), Radios and Stereos (without speakers), Video Game Consoles, VCR's
- Computers and computer accessories (limit of 4), Electronic Games
- Scanners, Printers, Modems, Digital Cameras
- Telephones (mobile/cellular & "Hardwire"), Electronic Pagers, Fax Machines
- CDs & DVDs

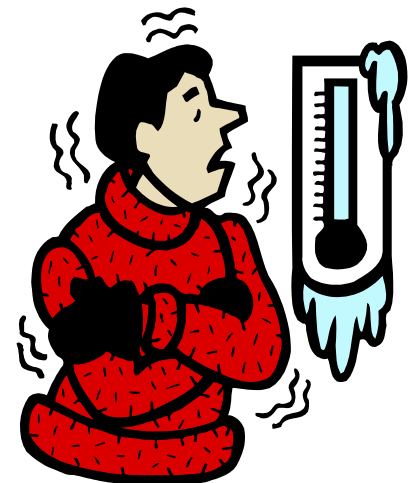


Household Hazardous Waste Depot



Cold Weather and Indoor Recesses

With the arrival of the cold weather, it is imperative that you send your child to school dressed appropriately. This includes remaining outside for 30 minutes at morning recess and 40 minutes at lunch recess. With severe weather conditions, reduced outdoor recesses or indoor recesses may take place. This decision is made on a day by day basis and would typically occur at about the -20°C mark (with wind chill). Please ensure that your child(ren) come to school with extra clothes as it is easier to take off a layer if they get too hot than it is to put on a layer they may not have if they get too cold. Also, please pack extra socks and pants so your child will have something to change into if they should happen to get wet.



Snowballs



In order to promote a safe and respectful environment on our school playground, students have been told that the throwing of snowballs is prohibited. Students are aware that snowballs may contain pieces of ice and rock and that they can cause injury to others or damage school property. Student safety is a priority at David Suzuki. Parents are asked to discuss the importance of keeping the snow on the ground and to remind students of our safe schools policy.

Reporting Your Child's Absence

You **MUST** call in your child's absence! We have a 24 hour absence reporting line, clearly state and **SPELL** your child's name and state their teacher's name as well. If we do not know where your child is we must call the police.

When calling in please indicate whether the absence is an illness, a medical appointment, an injury, Religious Holiday or a parent withdrawal (a day off). If it is an illness please indicate the following:

- Has a fever
- Stomach and intestinal symptoms (vomiting or diarrhea)
- Respiratory breathing cold symptoms (coughing, sneezing and congestion)

Thank you for your cooperation.



Cold and Flu Prevention



Please have a discussion with your child about how to best prevent the spread of cold and flu viruses.

Students need to wash their hands frequently throughout the day, particularly if they are coughing and sneezing in their hands. They should cough or sneeze into a tissue if they have one. If not, they should cough or sneeze into their sleeve. Remind your child(ren) not to share food or water bottles. Also, they should avoid sharing musical instruments unless they have sterilized the mouthpiece. If your child is not well, please keep her or him at home so as to help prevent the spread of flu and viruses.

Are you too sick to go outside at Recess?

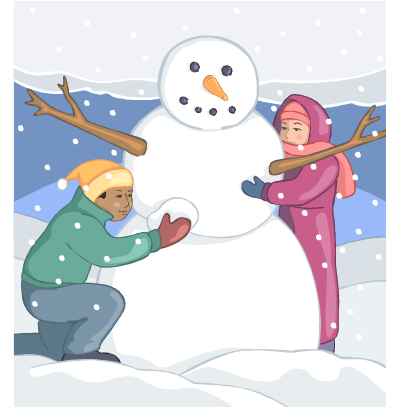
Thank you to everyone who follows our school rule that states that if you are too sick to go out for recess, you are too sick to attend school. Please note that supervision is not available for students to remain in classrooms nor at the office during recess times if they are ill. If your child attends school, he or she will be expected to go outside at both morning and lunch recess.



Winter is Here

Just another reminder that it is very important that students dress appropriately for the cold winter weather. Students should be bundled up! All children should wear boots, socks, snow pants, coats, hats and mittens/gloves.

With over 730 students in the school, please remember to label all your child's outdoor clothing with his/her name as many children have items that are the same.



Students should also have a pair of indoor shoes for use within the school.

UPCOMING DATES

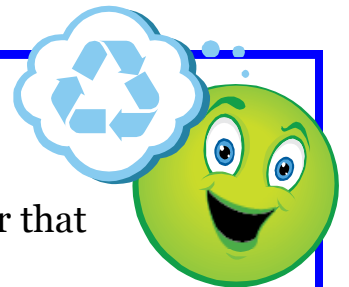
| | |
|----------------|--|
| Jan. 8 | MDHS Parent Information night 7 pm at MDHS |
| Jan. 12 | 6:30 School Council Meeting |
| Jan. 16 | Junior Kindergarten registration begins at 9:00 am, P.A. Day (no school for students) |
| Feb. 2 | P. A. Day (no school for students) |
| Feb. 18 | Reports Cards go home |

Phone Number Changes

Just a reminder that if you have any changes in your e-mail, home, work or cell phone numbers, please let the office know so we can update our records. We want to ensure that we are able to reach you in case of any emergencies.

Thank you.

Environmental Corner



This is just a reminder that we are collecting ink cartridges, cell phones and batteries to recycle. If you have any at your home or business, please send them to the school. We have boxes set up in the front hall of the school to collect these items.

Thank you for your support.